



Madison, Wisconsin

CITY OF MADISON

CITY ENGINEERING DIVISION

DEPARTMENT OF PUBLIC WORKS

PLAN OF PROPOSED IMPROVEMENT

INDEX OF SHEETS

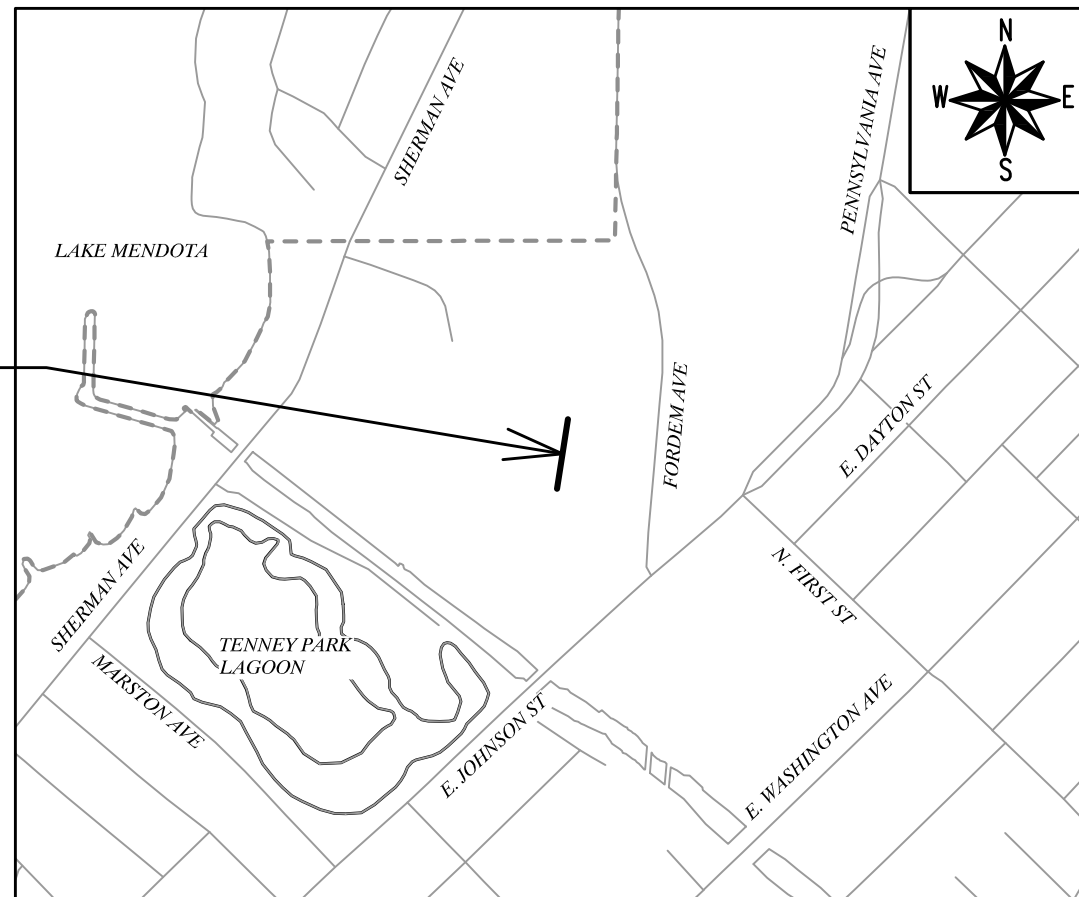
| SHEET NO. | TITLE |
|---------------------|------------------------|
| 1 | |
| D1 | CONSTRUCTION DETAIL |
| P1 | STREET PLAN & PROFILE |
| U1 | UTILITY PLAN & PROFILE |
| NO MAINTENANCE PLAN | |

1622 FORDEM AVENUE SANITARY SEWER REPLACEMENT - 2022

CITY PROJECT NO. 11850
CONTRACT NO. 9102

| CONVENTIONAL SIGNS | |
|--|---------|
| FIELD VERIFY ALL UTILITY LOCATIONS | |
| GAS | — G — |
| STORM SEWER | — ST — |
| SANITARY SEWER | — SAN — |
| WATER | — W — |
| BURIED ELECTRIC | — E — |
| OVERHEAD ELECTRIC | — OH — |
| POWER POLE | |
| ADA COMPLIANT RAMP W/ DETECTABLE WARNING FIELD | |
| COMBUSTIBLE FLUIDS | |

PROJECT LOCATION



NOTES:

ALL GUTTERS SHALL DRAIN WITH A MINIMUM GRADE OF 0.50% TOWARD STORM SEWER INLETS.

SIDEWALK RAMPS SHALL HAVE A MAXIMUM SLOPE OF 1" PER 12". SIDEWALK AND CURB RAMPS SHALL BE CONSTRUCTED WITH A SIDE SLOPE OF 2.00%. SIDEWALK SHALL HAVE A MINIMUM LONGITUDINAL SLOPE OF 0.50% AND A MAXIMUM LONGITUDINAL SLOPE OF 5.00% EXCEPT WHERE STREET GRADES EXCEED 5.00%.

PUBLIC IMPROVEMENT PROJECT APPROVED

NOVEMBER 16, 2021

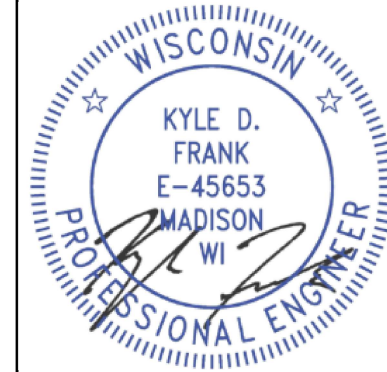
BY THE COMMON COUNCIL OF MADISON, WISCONSIN

PUBLIC IMPROVEMENT DESIGN APPROVED BY:

Greg Fries Apr 28, 2022

City Engineer Date

SANITARY SEWER DESIGNED BY:



Apr 28, 2022

UTILITY CONTACTS

SANITARY SEWER:
CITY OF MADISON ENGINEERING
CONTACT: KYLE FRANK
608-266-4098
KFRANK@CITYOFMADISON.COM

STORM SEWER:
MONARCH INVESTMENT & MANAGEMENT GROUP
CONTACT: ADAM MAVES
608-241-4179
REWIMANAGER@MONARCHINVESTMENT.COM

WATER:
CITY OF MADISON WATER UTILITY
CONTACT: JEFF BELSHAW
608-206-3856
JBELSHAW@MADISONWATER.ORG

GAS:
MADISON GAS & ELECTRIC COMPANY
CONTACT: ROGER AHLES
608-252-5682
RAHLES@MGE.COM

ELECTRIC:
MADISON GAS & ELECTRIC COMPANY
CONTACT: MARK BOHM
608-252-4730
MBOHM@MGE.COM

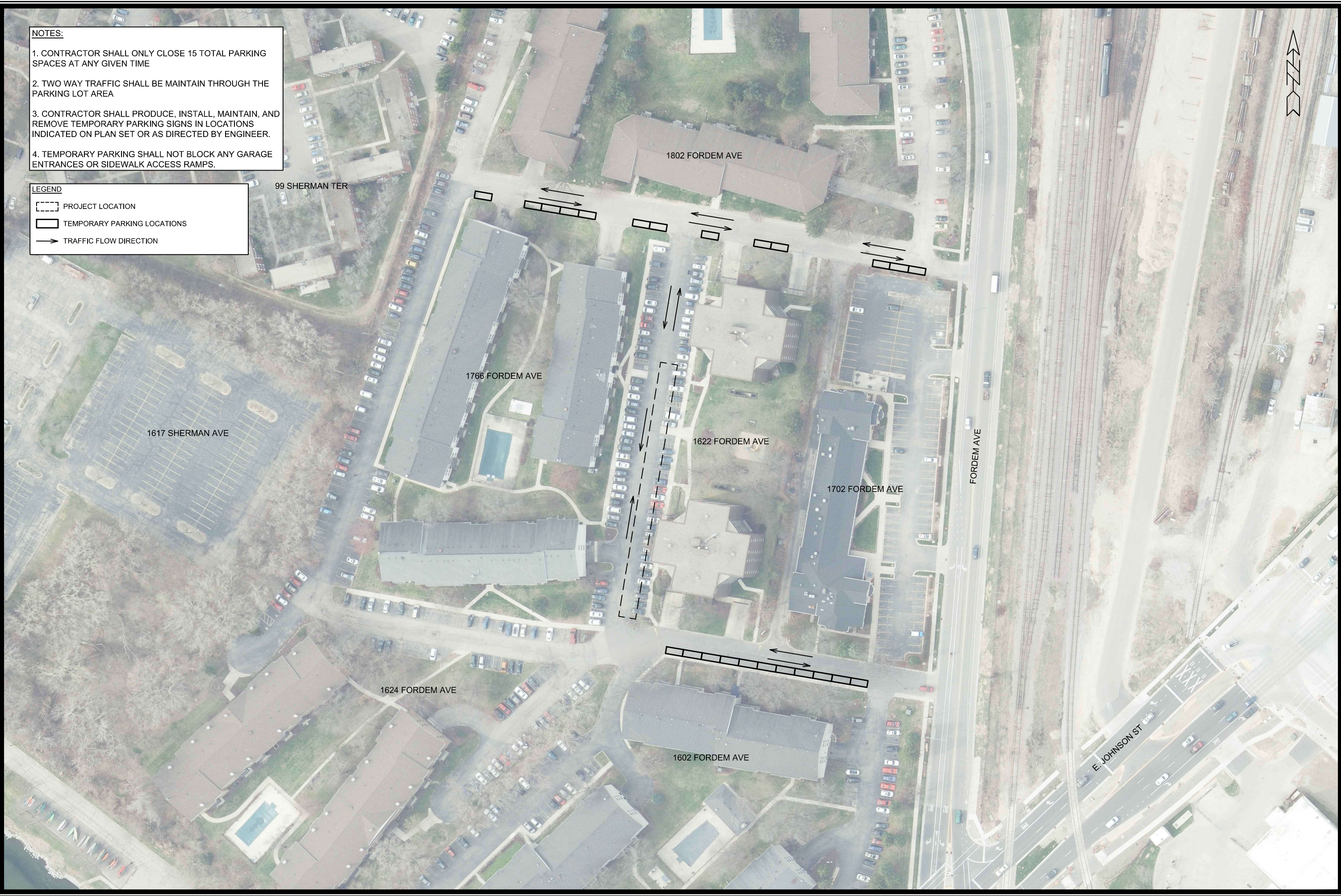
TELEPHONE & CATV:
CHARTER COMMUNICATIONS
CONTACT: JON MARSCHKE
608-225-2479
JON.MARSCHKE@CHARTER.COM

NOTES:

- CONTRACTOR SHALL ONLY CLOSE 15 TOTAL PARKING SPACES AT ANY GIVEN TIME
- TWO WAY TRAFFIC SHALL BE MAINTAIN THROUGH THE PARKING LOT AREA
- CONTRACTOR SHALL PRODUCE, INSTALL, MAINTAIN, AND REMOVE TEMPORARY PARKING SIGNS IN LOCATIONS INDICATED ON PLAN SET OR AS DIRECTED BY ENGINEER.
- TEMPORARY PARKING SHALL NOT BLOCK ANY GARAGE ENTRANCES OR SIDEWALK ACCESS RAMPS.

LEGEND

- PROJECT LOCATION
- TEMPORARY PARKING LOCATIONS
- TRAFFIC FLOW DIRECTION



| MARK | REVISION | DATE | BY |
|-------|-------------------|------|----|
| 11850 | 1/14/2022 5:42 PM | | |

11850
 1622 FORDEM AVENUE SANITARY SEWER REPLACEMENT - 2022
 MADISON, WI
 CONTRACT NO: 9102



11850
 D-1

M:\DESIGN\Projects\11850\CAD\Streets\11850EN-Details.dwg

